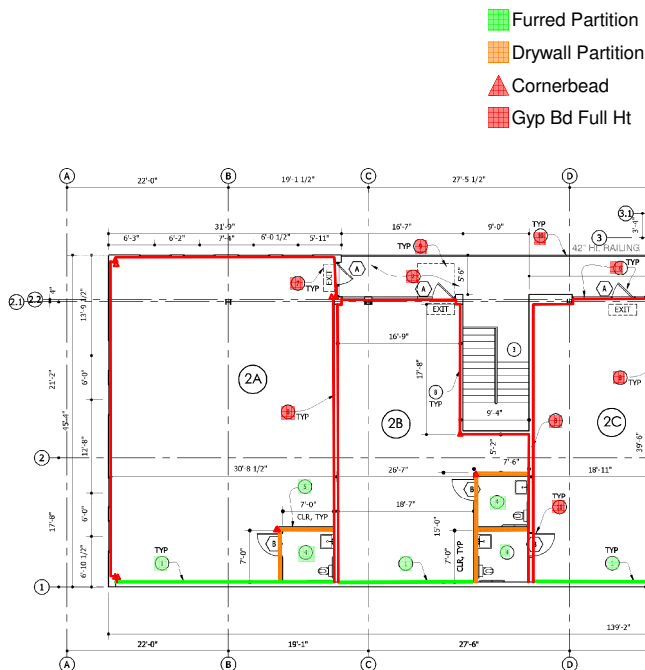


PRODUCED BY AN AUTODESK EDUCATIONAL PRODUCT

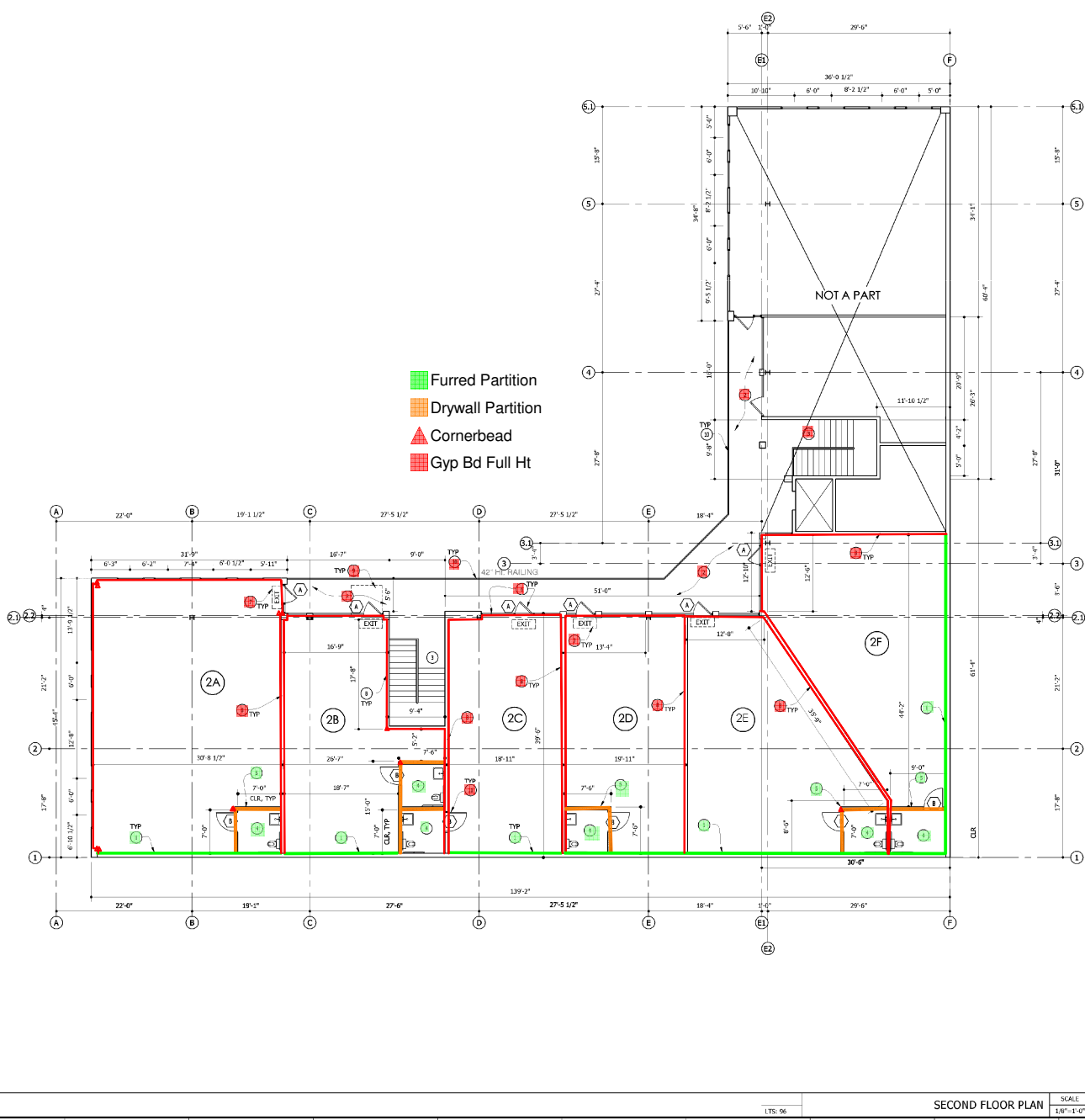


FLOOR PLAN KEY NOTES

- 1 EXISTING 6" CMU BLOCK WALL. PROVIDE 5/8" THK GYP BD FURRING OR 1/2" x 1 1/2" x 3/8 GA. METAL FURRING CHANNELS @ 16" O.C. EXTEND GYPSUM WALL BOARD TO 6" ABOVE CEILING.
- 2 EXISTING OPEN BALCONY TO REMAIN.
- 3 EXISTING STAIRCASES TO REMAIN.
- 4 NEW TOILET ROOM PLAN, REFER TO SHEET A-3.0
- 5 6" MET. STUD (20ga @ 36" O.C.) MET. STUD WALL W/ RIS SHOWN BELOW. ALL THE WAY UP TO GYP CHECK.
- 6 EXISTING ALUMINUM STOREFRONT AND DOOR TO REMAIN. VERIFY ADA COMPLIANCE PER DETAIL.
- 7 ILLUMINATED EXIT SIGN WITH MIN 5 FT CANDLES INTENSITY WITH BATTERY BACK-UP. SEE ELECT.
- 8 EXISTING DEMISING WALL TO REMAIN.
- 9 VERIFY 5X5' LEVEL LANDING AT EXIT DOORS WITH 2Mx4M CROSS SLOPE.
- 10 EXISTING 42" (MIN) HIGH GUARD RAIL TO REMAIN.
- 11 NEW DOOR AT RESTROOM. SEE DOOR TYPES DETAIL.

LEGEND

- (A) DOOR TYPE. SEE (1) FOR DOOR SCHEDULE
 SEE (7) FOR ROOM FINISH SCHEDULE




LTS: 96

SECOND FLOOR PLAN SCALE 1/8" = 1'-0" 2

FLOOR PLAN KEY NOTES SCALE NONE 1

ARCHITECT



Bala Vairavan Architects Inc.
 4915 COLUMBIAN CANYON, STE 3
 SHERMAN OAKS, CA 91403
 TEL: (818) 205-7420

THIS DRAWING IS THE EXCLUSIVE PROPERTY OF BVA INC. THE INFORMATION SHOWN MAY NOT BE USED FOR THE DRAWINGS REPRODUCED WITHOUT BVA INC'S WRITTEN CONSENT. COPYRIGHT: BALA VAIRAVAN ARCHITECTS INC. ALL RIGHTS RESERVED.

PROJECT

VANILLA SHELL IMPROVEMENTS

VENICE & WESTERN COMMERCIAL CENTER

1570 S WESTERN AVENUE
 LOS ANGELES, CA 90006

DWRN

SILVER PENINSULA CORNER LLC

11601 WILSHIRE BLVD, STE 1900
 LOS ANGELES, CA 90025

01/25/08 PLAN CHECK ISSUE

NOT FOR CONSTRUCTION

REVISIONS

DRAWING TITLE

SECOND FLOOR PLAN

BVA JOB # 08-001

SCALE: DATE: 01/25/08

SHEET NUMBER

A-1.1